

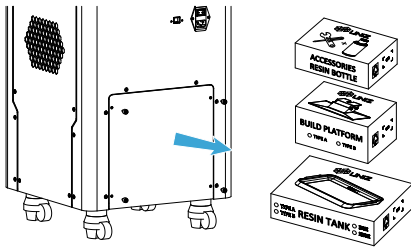
QUICK START GUIDE

for NBEE 3D PRINTER

SET-UP YOUR PRINTER

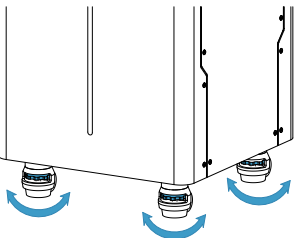
A Take accessories out.

1. Remove the bottom rear cover.
2. Remove the packing strap and take out the accessory boxes.

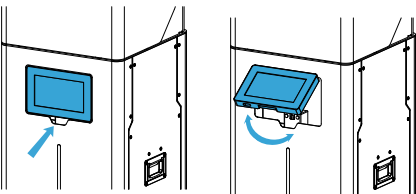


B Position the printer.

1. Place the printer on the ground.
2. Adjust the four leveling screws under the printer to level it.



C Flip the touch screen up.

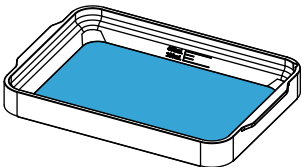


D Check the Resin Tank.

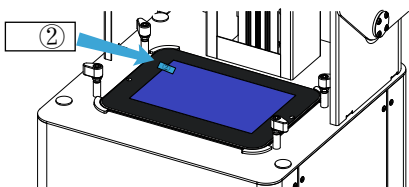
1. Take the Resin Tank out from box.



2. Check the Resin Tank, the film should be intact.

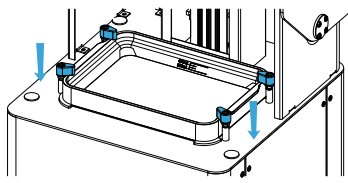


3. Peel off the upper film marked '2'. The real protective film is lower and should be clean.



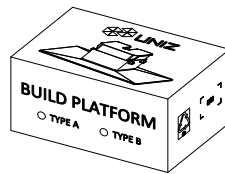
- !** Paste a new LCD protective film if the old one is broken.

4. Put the Resin Tank onto LCD screen and turn the four lock blocks to lock it.

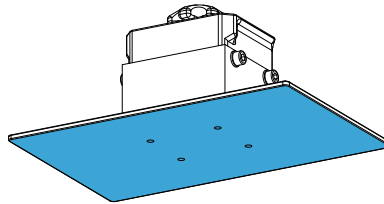


E Check the Build Platform.

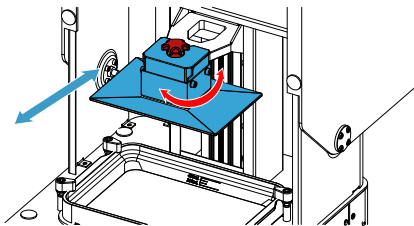
1. Take the Build Platform out from box.



2. Check the Build Platform, the bottom should be flat and clean.

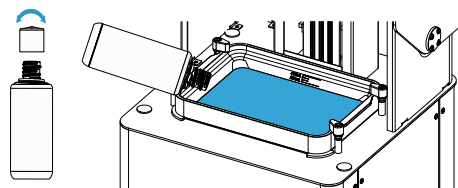


3. Insert the platform onto Arm and turn the lock handle clockwise to lock it.



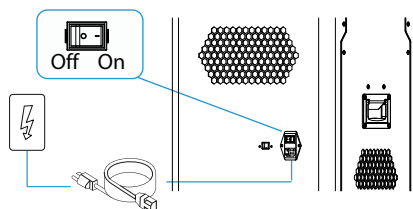
F Load the Resin.

1. Take the Cap off the Resin Bottle.
2. Pour the resin into Resin Tank directly.
3. Put the Cap back and place it steady.
4. Close Front Cover of the printer.



G Light it up.

1. Connect power cable.
2. Toggle the switch to ON.



- !** 1. Please make sure the power cable is connected firmly.
2. Confirm the voltage is matched.

PREPARE THE SOFTWARE

H Download and install UNIZ Dental.

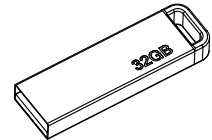
<https://www.uniz.com/software>

You can also find the install file in the USB disk.

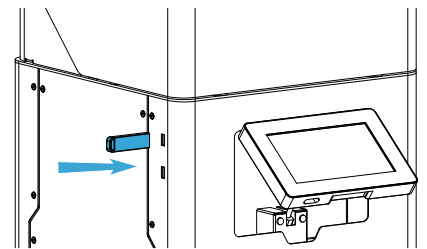
START A PRINT

I Prepare the printing file.

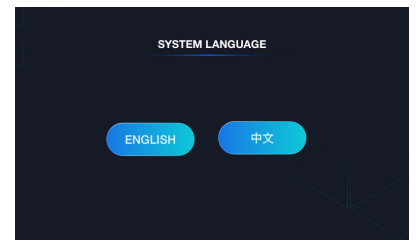
1. Take out the USB disk in accessory box.



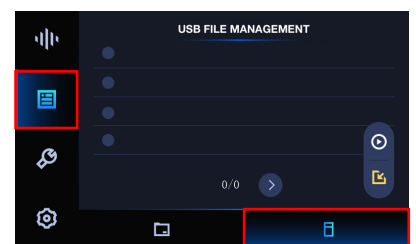
2. Insert the USB disk from the left side of the printer.



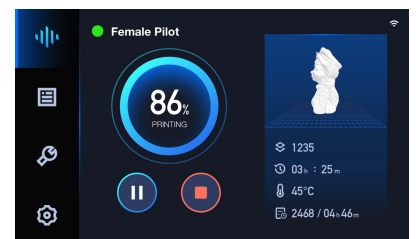
3. Choose the preferred language.



4. Enter USB File Management page, select the slice file you want to print.



5. Click PRINT to start the printing process, printing details will show up.



J Finish Printing.

1. Clean up the remaining resin on the Build Platform, then loose the lock screw and take the Build Platform out.
2. Use the scrapper to remove the models.

*For more details regarding usage and maintenance, please check User Manual.